

PEOPLE TALK
ABOUT A MORE
SUSTAINABLE FUTURE.

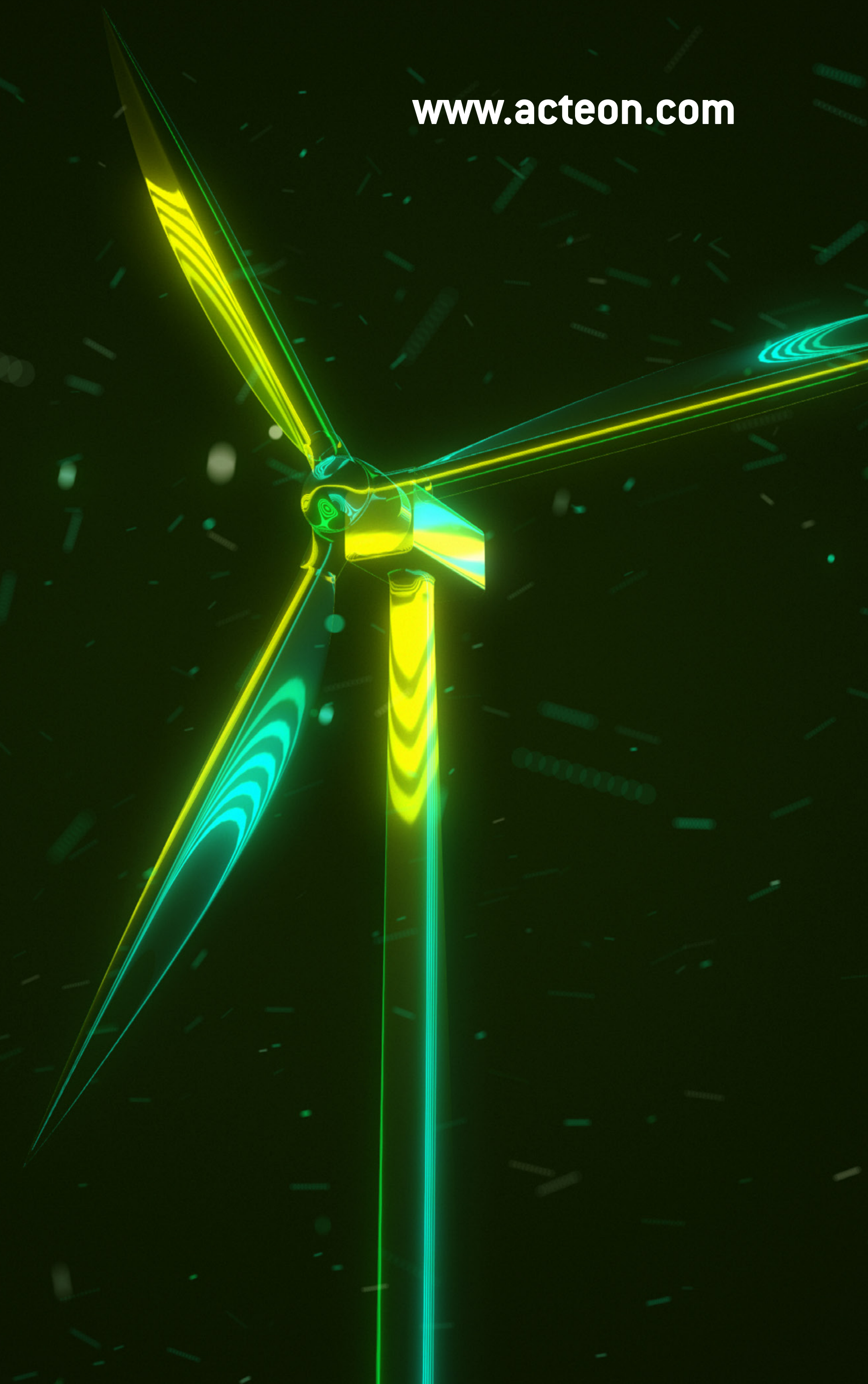
WE'RE
ALREADY
BUILDING IT.

ENTER



ACTEON

www.acteon.com



INTRODUCTION

ACTEON IS BRINGING THE FUTURE FORWARD

Combining the most exciting talent and technology from across the renewables sector and delivering integrated solutions to the greatest challenge we face.

FIND OUT MORE



DISCOVER...

01 / BUILDING A MORE SUSTAINABLE FUTURE ▶

02 / EXPERIENCE ▶

03 / EXPERTS ▶

04 / TECHNOLOGY ▶

05 / SCALE AND EFFICIENCY ▶

06 / ENERGY TRANSITION VISION ▶

ACTEON





HOW ACTEON IS BUILDING A MORE SUSTAINABLE FUTURE, ONE FOUNDATION AT A TIME

At Acteon, we are proud to deliver proven and innovative marine solutions for the offshore renewable energy industry. In an ever changing and growing renewables market, we are evolving to meet escalating industry demand by integrating scalable solutions for every phase of the project lifecycle.

Whether you are looking to drive down installation cost, overcome environmental barriers, or minimise project interfaces, we bring the experience, expertise, technology, and operational scale to enable your energy transition vision.

[Next page ▶](#)

More than
2,500
offshore
foundations installed



25+
years of experience in
offshore wind installation



72
monopiles installed on
a project in record time [↗](#)



PEOPLE TALK
ABOUT A MORE
SUSTAINABLE FUTURE.

OUR
EXPERIENCED
BRANDS ARE
DESIGNING IT.

[Next page ►](#)

BUILDING A MORE
SUSTAINABLE FUTURE

EXPERIENCE

EXPERTS

TECHNOLOGY

SCALE AND EFFICIENCY

ENERGY
TRANSITION VISION





WHY EXPERIENCE MATTERS IN A CHANGING WORLD

To enable the efficient installation of larger turbines, and to allow turbines to be installed in challenging substrates, we need to move to more integrated foundation systems in which the pile, pile handling, drive-drilling system, and grouting systems are integrated with each other and the installation vessel. This is an area where Acteon is uniquely placed to help define new installation techniques. We leverage the expertise of our Marine Foundations brands to provide solutions to install large turbine foundations.

SEE OUR GLOBAL TRACK RECORD 





[Or continue to the next page ►](#)

Over
10 million
hammer blows delivered
in the last 10 years.





Decades of experience and a history of product innovation allows us to:

-  Adapt technology and techniques to meet the challenges associated with larger foundations.
-  Assess all projects using a holistic approach and implement strategies for improvement including optimising equipment set up for future needs to reduce environmental impact.
-  Provide a customised approach for regional challenges.
-  Leverage the expertise from across our brands to ensure minimised interfaces and project continuity.

[Next page ▶](#)

Some of our experienced brands:



A global marine foundation specialist with a range of equipment to undertake nearshore, offshore and subsea foundation projects throughout the world in any geology at any water depth.



For more than a century MENCK has led pile driving technology and services for renewables, oil and gas, and civil engineering projects around the world.





VIDEO

IMPROVING INSTALLATION PERFORMANCE THROUGH DATA INSIGHTS AND TECHNOLOGY INTEGRATION

WATCH VIDEO 

[Or continue to the next page ▶](#)



BUILDING A MORE
SUSTAINABLE FUTURE

EXPERIENCE

EXPERTS

TECHNOLOGY

SCALE AND EFFICIENCY

ENERGY
TRANSITION VISION



PEOPLE TALK
ABOUT A MORE
SUSTAINABLE FUTURE.

OUR EXPERTS
ARE MAKING
IT A REALITY.

[Next page ►](#)

BUILDING A MORE
SUSTAINABLE FUTURE

EXPERIENCE

EXPERTS

TECHNOLOGY

SCALE AND EFFICIENCY

ENERGY
TRANSITION VISION





THE EXPERTS BEHIND THE ENERGY TRANSITION

We believe that a multi-skilled workforce is key to reducing project footprint; the right people, in the right place and at the right time contribute to minimised costs for developers. Getting Acteon's experts involved early can help to reduce costs through optimising designs, reviewing constructability and identifying issues.

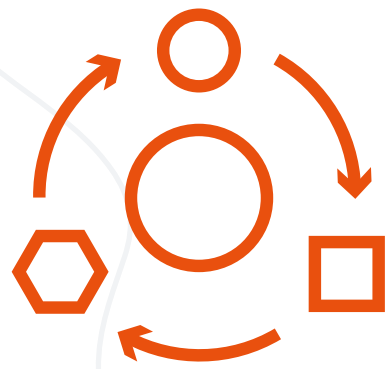
Acteon applies expertise and cutting-edge engineering to the design, delivery and management

of dynamic fixed bottom marine structures. Our advanced systems engineers used advanced design methodologies and processes to meet the challenges of greater water depths, larger foundations, harsher environmental conditions, and higher temperatures and pressures.

As an independent partner for your project, Acteon can engineer all systems as the main contractor or as part of an integrated team.

[Next page ▶](#)





CROSS-DISCIPLINARY EXPERTISE

Acteon's personnel transfer the skills and knowledge obtained from offshore oil and gas to the offshore wind industry where similar skills are required. Cross-disciplinary expertise in design, engineering, installation and operations enables Acteon to integrate services and industrialise project delivery.

[Next page ►](#)



DRIVING DOWN COST

Acteon drives down costs for operators by optimising design and installation activities and improving scheduling and resource utilisation.



LOWER LCoE THROUGH STANDARDISATION

Our engineering solutions and factory approach to construction and installation help to optimise capital and operating expenditure for a lower life-cycle LCoE.



PEOPLE TALK
ABOUT A MORE
SUSTAINABLE FUTURE.

OUR INNOVATIVE TECHNOLOGY DRIVES VALUE.

[Next page ►](#)

BUILDING A MORE
SUSTAINABLE FUTURE

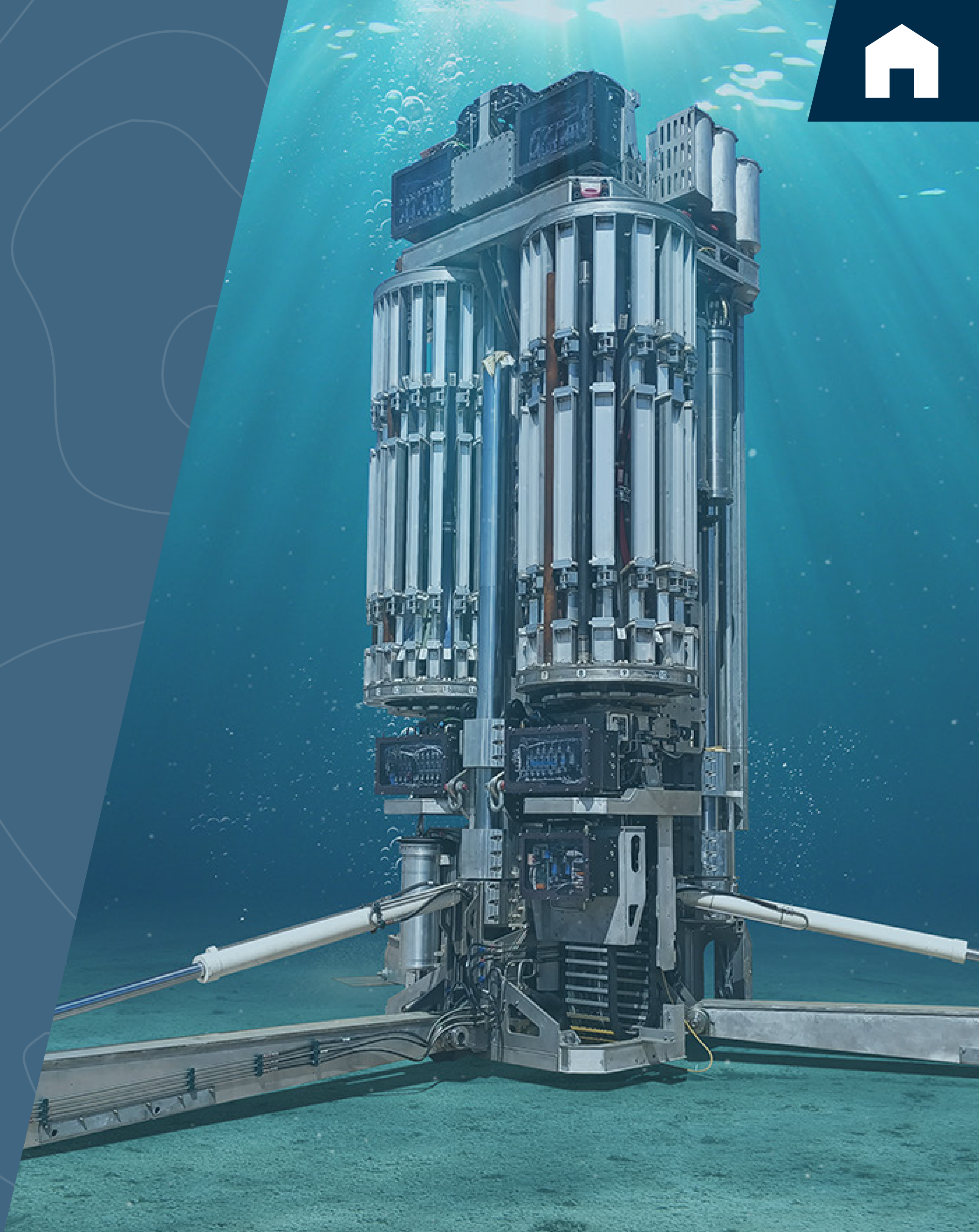
EXPERIENCE

EXPERTS

TECHNOLOGY

SCALE AND EFFICIENCY

ENERGY
TRANSITION VISION



THE TECHNOLOGY THAT IS DRIVING DECARBONISATION

As the energy industry navigates the transition towards more renewables, we constantly adapt our technology and methods to fit the needs of their new ventures. Our efficient designs and innovative installation methods take into consideration the environmental and commercial constraints of the renewables market, as well as its expansion towards deeper waters and larger turbines.

[Next page ►](#)



BUILDING A MORE
SUSTAINABLE FUTURE

EXPERIENCE

EXPERTS

TECHNOLOGY

SCALE AND EFFICIENCY

ENERGY
TRANSITION VISION



OUR TECHNOLOGIES

NOISE MITIGATION SYSTEMS

Noise mitigation systems in our hammers, combined with topside noise reduction, ensure continuous drivability, while helping customers to achieve their environmental goals.

AUTONOMOUS VEHICLES

Adopting alternative methods, such as using autonomous underwater vehicles for large seabed surveys, reduces project costs and carbon footprints.

[Next page ►](#)

REMOTE TECHNOLOGY

Utilising remote technology and virtual asset management tools such as iSite can reduce personnel on board (POB) by up to 30% by onshoring tasks to reduce travel and aviation costs whilst retaining access to highly skilled people when required.

SITE INVESTIGATION SOLUTIONS

A new generation seafloor drilling and geotechnical site investigation solution (PROD5) delivers more data insights with less cost.





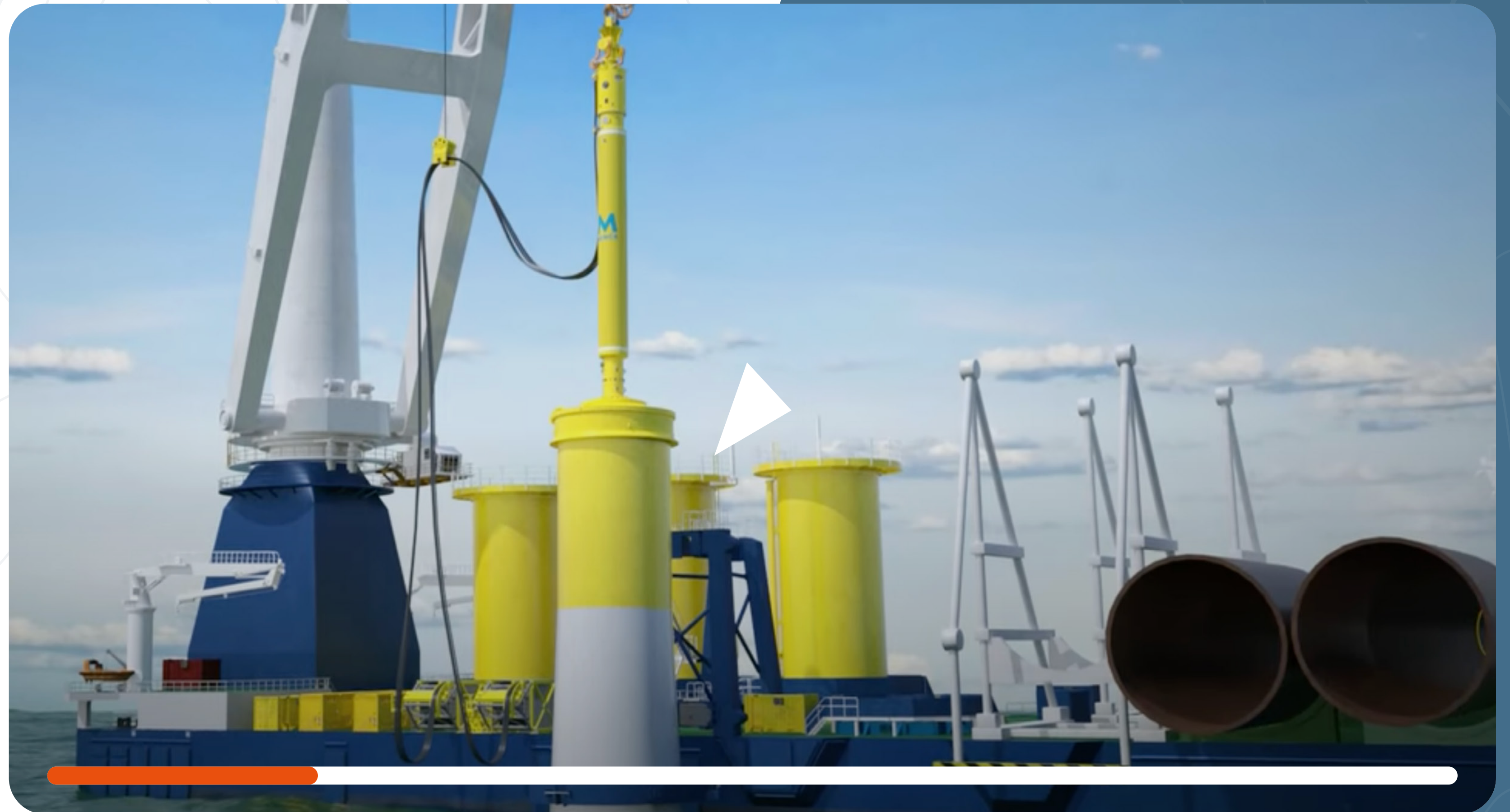
VIDEO

RELIABLE INSTALLATION SOLUTIONS FOR LARGE MONOPILES

SEE OUR TECHNOLOGY IN ACTION

WATCH VIDEO [↗](#)

[Or continue to the next page ▶](#)



BUILDING A MORE
SUSTAINABLE FUTURE

EXPERIENCE

EXPERTS

TECHNOLOGY

SCALE AND EFFICIENCY

ENERGY
TRANSITION VISION



PEOPLE TALK
ABOUT A MORE
SUSTAINABLE FUTURE.

OUR GROUP BRINGS SCALE AND OPERATIONAL EFFICIENCY.

[Next page ►](#)

BUILDING A MORE
SUSTAINABLE FUTURE

EXPERIENCE

EXPERTS

TECHNOLOGY

SCALE AND EFFICIENCY

ENERGY
TRANSITION VISION





AN INTEGRATED SOLUTION FOR THE WORLD’S RENEWABLE ENERGY NEEDS

There will likely be more infrastructure installed in the sea over the next two decades than has been installed during the entire history of the oil and gas industry.



[Next page ▶](#)

All this infrastructure needs to be **engineered, constructed** and then **maintained** during its life cycle. Accordingly, at Acteon we are expanding our service offering and global footprint and have recently **simplified our business structure** to make life easier for our customers to engage with us at a **global scale**.

With the impending shortage of key equipment and services it is crucial that developers **work with us early** in-order to consider installation cost and complexity into the project design. Currently, each new wind farm tends

to have **bespoke foundation designs**. This drives up installation costs and risks, limits available equipment and means there is often no equipment redundancy. One solution is to design wind farms around **already available installation systems**.

Just one example of where **early engagement** really makes a difference is using **integrated geophysical and geotechnical surveys** as opposed to commissioning them separately. Through a **collaborative approach**, faster site assessment and targeted geotechnical work is ensured.





VIDEO

HOW IS ACTEON WORKING TO MITIGATE SUPPLY CHAIN BOTTLENECKS? HEAR FROM OUR EXPERT

WATCH VIDEO 

[Or continue to the next page ▶](#)



BUILDING A MORE
SUSTAINABLE FUTURE

EXPERIENCE

EXPERTS

TECHNOLOGY

SCALE AND EFFICIENCY

ENERGY
TRANSITION VISION



PEOPLE TALK
ABOUT A MORE
SUSTAINABLE FUTURE.

WE ENABLE
YOUR VISION
FOR ENERGY
TRANSITION.

NEVER MISS AN INSIGHT FROM OUR THOUGHT LEADERS [↗](#)

BUILDING A MORE
SUSTAINABLE FUTURE

EXPERIENCE

EXPERTS

TECHNOLOGY

SCALE AND EFFICIENCY

ENERGY
TRANSITION VISION

